

IP65 Rated Outdoor Monitor

User's Manual



Manual Version OWTA1.0

Safety Instructions



- Please handle with care so as to not damage the LCD panel.
- The holes or openings on the display are designed for ventilation. Do not cover or block the ventilation holes or openings with any objects.
- Remove protective covering from the screen before you use the display.
- Do not attempt to repair this product yourself! Improperly disassembly of the product may invalidate the warranty and lead to possible danger!

Quick Start Guide (with media player set to Standalone)

This section of the guide is to allow rapid set up and use of the unit. Please refer to the main part of the User Guide for full information on use of the unit.

Please follow the steps detailed below:

1. Unpack the unit and the accessories pack
2. Insert the power lead into the screen and connect to the mains outlet, if the screen doesn't turn on automatically please press the "POWER" button on the larger of the two remote controls.



3. Once the unit has booted up, it should already be on the "HDMI 2" input and displaying the signal from the internal media player. Once the media player has finished booting up it should start playing some sample content.
4. Collect the media files you want to display and check their compatibility (See section 2.2)
5. Using a PC copy your media files onto a blank USB stick without putting them inside a folder, then remove the USB stick
6. Insert the USB stick into the USB port of the screen (see below Figure 1)

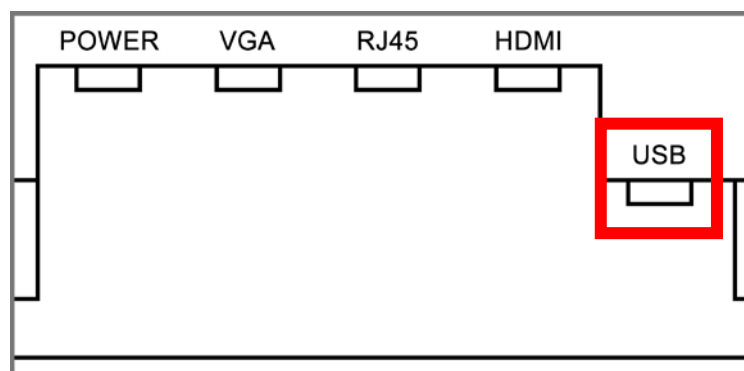


Figure 1 Screen Inputs - USB

7. There will now be an on-screen message telling you that the screen's current content is being deleted and the files from the USB stick are being copied to the screen's internal memory. Once this is complete there will be another message on-screen asking you to remove the USB stick.
8. Remove the USB stick and your media files should play in a continuous loop.

Contents:

1.	Introduction	5
1.1	Box Contents	5
1.2	Product Overview	5
1.3	Remote Control 1	6
1.4	Remote Control 2	7
1.5	Replacing the Remote Control Battery	8
2.	Menu Operation (using Remote Control 1)	9
2.1	Inputs	12
2.2	Supported Media Formats	13
3.	F.A.Qs and Troubleshooting Guide	16
3.1	How do I play PowerPoint presentations on my display?	16
3.1.1	Option 1 (for plain slides with no animation):	16
3.1.2	Options 2 (for presentations with animation):	16
3.2	Video Format Conversion	17
3.2.1	Format Factory	17
3.2.2	HD Video Converter Deluxe	19
3.3	Connecting screen to PC	20
3.4	My media file does not fit properly on the screen	20
3.5	My media file will not display or is missing from the playlist	21
3.6	My media files will not update.....	21
3.7	My moving GIF files will not move.....	21

Table of Figures

Figure 1 Screen Inputs - USB.....	2
Figure 3 Product Overview – IR Remote Control Sensors.....	5
Figure 4 Screen Inputs.....	12

1. Introduction

Congratulations on your purchase of our product. Please read carefully and follow all instructions in the manual before first use.

For user convenience, a number of operations can be performed through the remote controls.

Attention:

Do not change any default setting when it is unnecessary.

1.1 Box Contents

1xOutdoor Monitor (with built-in Android Media Player)

1xWaterproof Power Cable

1xWaterproof HDMI Cable

1xRemote Control 1 (with AAA batteries)

1xRemote Control 2 (with AAA batteries)

1xCD (User Manual)

IMPORTANT: Please retain your screen's packaging for the duration of your warranty.

1.2 Product Overview

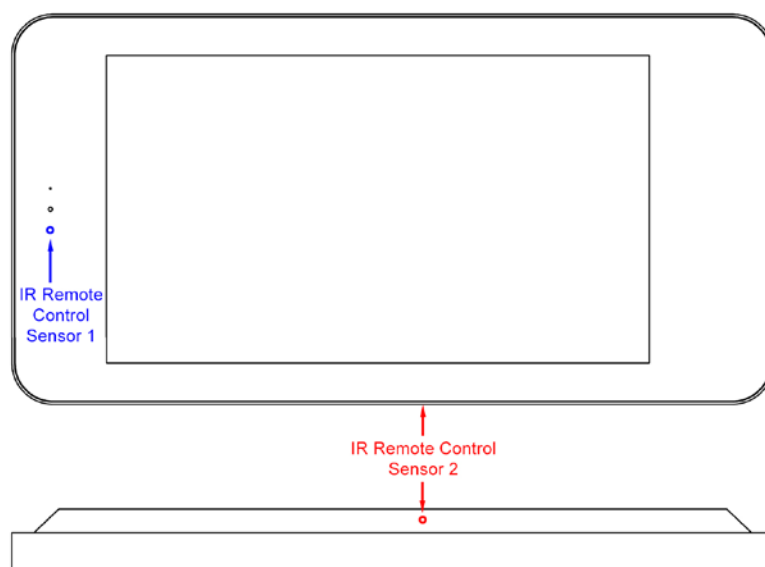


Figure 2 Product Overview – IR Remote Control Sensors

1.3 Remote Control 1



Button	Function
POWER	Power on or off
MENU	Main Menu
TV/AV	Select Input
▲	Up (navigation)
◀	Left (navigation)
▶	Right (navigation)
▼	Down (navigation)
OK	Confirm selection
EXIT	Exit menu
STILL	Freeze frame
ZOOM	Aspect ratio
P.MODE	Picture mode

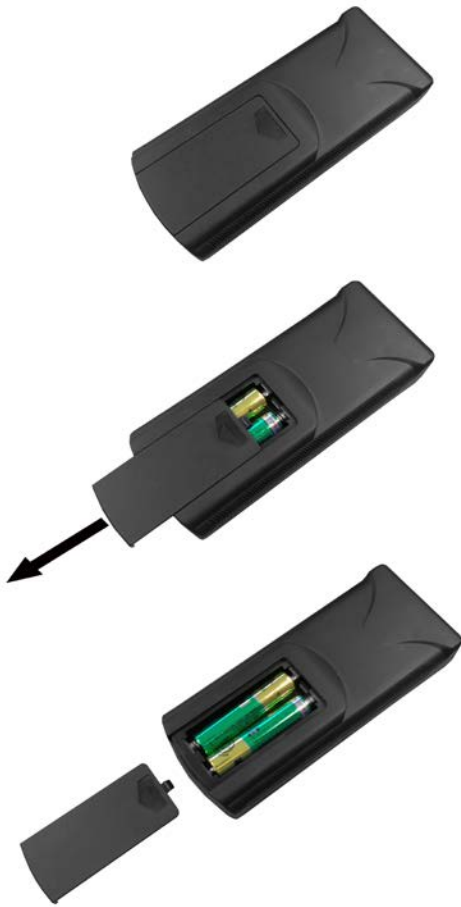
1.4 Remote Control 2



Button	Function
POWER/⏻	Power on or off
MENU	Display settings
SETUP	Menu settings
SOURCE/↻	Input source
▲	Up (navigation)
◀	Left (navigation)
▶	Right (navigation)
▼	Down (navigation)
▶/	Play media
■	Stop media
⏮	Previous
⏭	Next
🔊	Display settings
🔊+	Raise volume
🔊-	Lower volume

1.5 Replacing the Remote Control Battery

1. Slide the battery cover off, as shown below.
2. Remove the used batteries.
4. Insert the two new AAA batteries with their terminals corresponding to the indicators.
5. Put the cover back on.



2. Menu Operation (using Remote Control 1)

Selecting Input Source

To select your input source, first press the TV/AV button. You will then see the following list of options:

PC
TV
AV
S-Video
YPBPR
HDMI 1
HDMI 2
USB

If you are using the internal media player please select "HDMI 2" by navigating to it then pressing "OK".

Main Menu

The Main Menu includes the following submenus: Picture, Sound, Time, Option and Channel.

Press "MENU" to bring up the menus, press → and ← to navigate and "OK" to select the desired item. Press "Menu" at any time to exit the Main Menu.

Picture

Here you can adjust the picture settings of your screen such as Brightness, Contrast and Colour.

Picture Mode

To adjust these settings manually please set the Picture Mode to "User".

Picture Mode	Standard (or Mild or User or Dynamic)
Contrast	50 (or 0-100)
Brightness	50 (or 0-100)
Color	50 (or 0-100)
Sharpness	50 (or 0-100)
Tint	50 (or 0-100)
Backlight	100 (or 0-100)
↵ MENU	

Color Temperature

To adjust these settings manually please set the Colour Temperature to "User".

Colour Temperature	Standard (or Mild or User or Dynamic)
Red	50 (or 0-100)
Green	50 (or 0-100)
Blue	50 (or 0-100)
↵ MENU	

Aspect Ratio

This should be set to 16:9 for full screen display.

4:3
16:9
↶ MENU

Sound

This submenu is irrelevant as the Outdoor Monitor does not have built-in speakers.

Time

Here you can set the time and on/off power timer for the screen.

NOTE: We recommend using the internal media player to set the time and on/off power timer settings.

Clock	DATE/TIME
Power Off Time	Off
Power On Time	Off
Sleep Timer	Off
Auto Sleep	Off

Option

Here you can change the OSD language, set the "NO SIGNAL" screen colour and restore the screen's default settings.

NOTE: Please do not change the "Energy saving" and "LOCK_KEY" settings.

OSD Language	English
Restore Factory Default	
NO SIGNAL SCREEN	BLUE (or BLACK)
Energy saving	Off
LOCK_KEY	Off

2.1 Inputs

POWER – AC Power input

VGA – Video Graphics Array Signal Input

RJ45 – Input for Ethernet cable (network use only)

HDMI – High Definition Multimedia Interface Signal Input

USB – Universal Serial Bus (for updating internal media player)

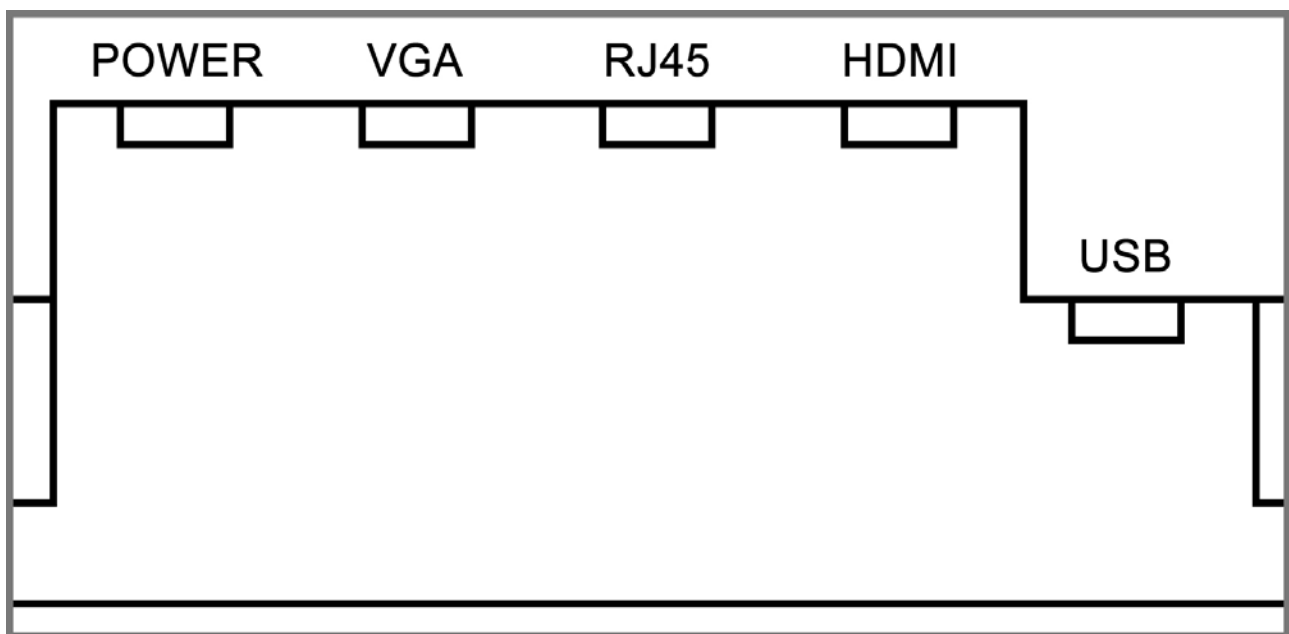


Figure 3 Screen Inputs

2.2 Supported Media Formats

Images:

Container	JPEG
Compression	Baseline
Colour Mode	RGB
Width	1920 (1080 for portrait)
Height	1080 (1920 for portrait)
DPI	300

Videos:

Container	MP4, AVI, MPG
Codec	MPEG-1, MPEG-2, MPEG-4, XVID, H.264
Width	1920 (1080 for portrait)
Height	1080 (1920 for portrait)
Audio	AAC or MP3

1. We do not recommend using WMV or MOV file types and FLV video file types are not supported.
2. This unit does NOT support Sony ATRAC3, DTS or Dobby HD audio file types.

3. Installation

Before mounting your screen you must first make sure that the vents on the rear of the unit will be pointing downwards. If you are mounting in landscape the remote control sensors on the front of the unit should be on the left hand side.

1. Mount the bracket to the wall:



2. Hang the screen on the bracket then slide along the keyholes to fix into position:



3. Insert the “hasp” locking bar:



4. Loop a padlock through both holes (on the bracket and the locking bar) and lock:



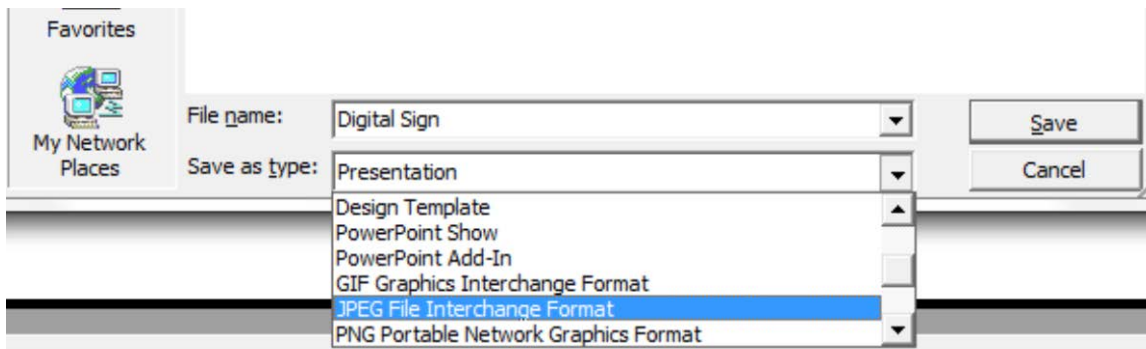
4. F.A.Qs and Troubleshooting Guide

4.1 How do I play PowerPoint presentations on my display?

4.1.1 Option 1 (for plain slides with no animation):

You can save the PowerPoint presentation as a JPEG File Interchange Format (.JPG). Microsoft PowerPoint software allows the user to do this

- 1) Create or open a PowerPoint presentation.
- 2) Click File > Save As
- 3) Enter a File name
- 4) Click on "Save as type" scroll down and find the file extension "JPEG file interchange format", as shown in the image below.



- 5) Click Save.
- 6) A message will appear asking if you would like to save all slides as JPEG's
- 7) Once you have selected your option, The JPEG images will be saved and are ready to use within a playlist or to upload to a storage device.

Note: For the best portrait resolution, you can use this PowerPoint Page Setup: Width 42.6cm; Height 24cm (16:9 Ratio)

4.1.2 Options 2 (for presentations with animation):

You can convert the PowerPoint presentation to a MPEG video clip. For the best display quality you should use the MPEG2 format which gives the best display quality. We suggest that you use the following software:

Software Name: Wondershare PPT2DVD

Web link: <http://www.ppt-to-dvd.com/ppt2dvd/overview.html> :

Select Video Format: PowerPoint to MPEG2 Video Settings:

- TV Standard: NTSC (29.97fps);

- Standard: Standard DVD;
- Aspect Ratio: 16:9 (widescreen);
- Encode Size: Width 720, Height 480.

4.2 Video Format Conversion

There are two possible tools for converting video

4.2.1 Format Factory

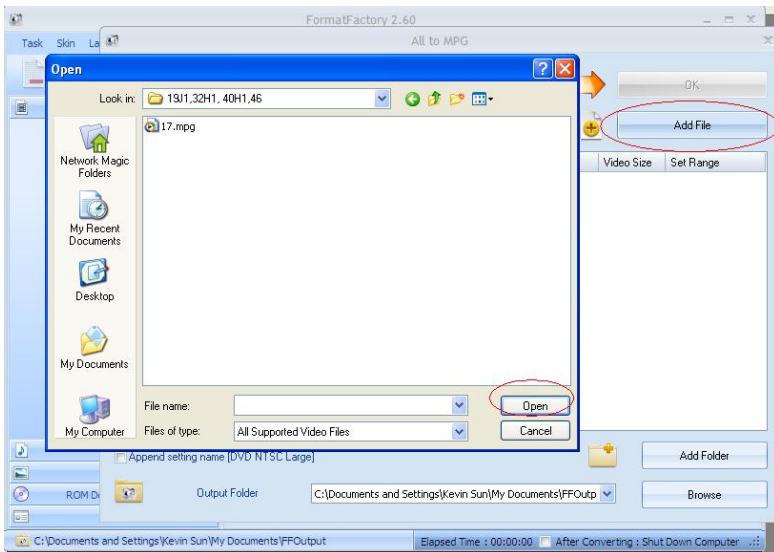
This is a free multipurpose convertor that can be used for normal definition

Standard Definition

1. Download a free convertor (Windows) called Format Factory which can be found at <https://format-factory.en.softonic.com/>
2. Start the Software (picture 1).

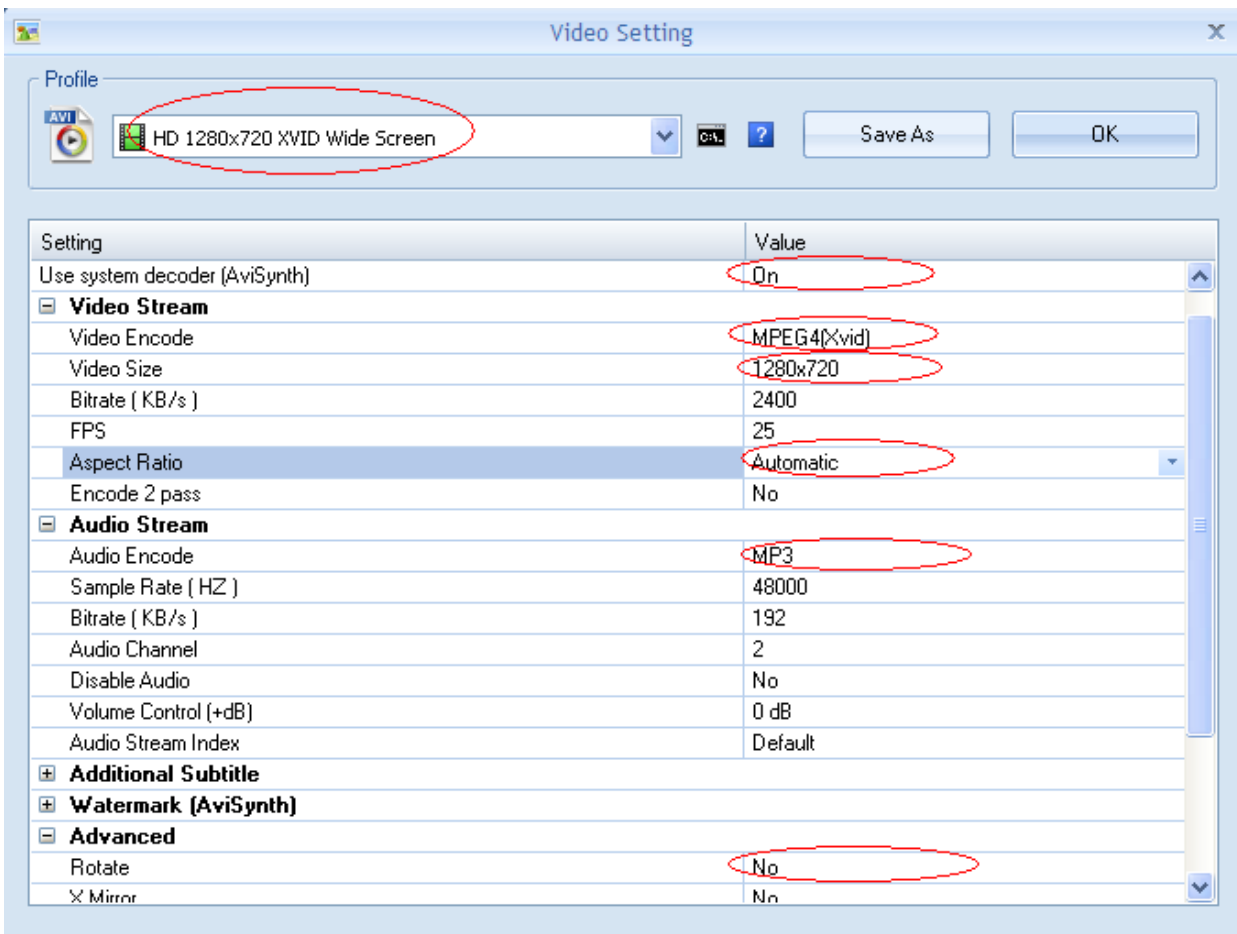


3. On the left hand window pane select the 'Video' conversion options.
4. Select the 'All to AVI' conversion
5. Click the 'Add File' button and locate the file to be converted.



6. Click the 'Output Setting' button and modify it to look like the image shown below. A number of important settings have been highlighted.

7. Select 'OK' to save these changes and then Press 'OK' button to goto main screen



8. Press the 'Start' button along the top to start the conversion. Once completed, press the 'Output Folder' to see the converted video.



4.2.2 HD Video Converter Deluxe

This is only really useful for High Definition videos.

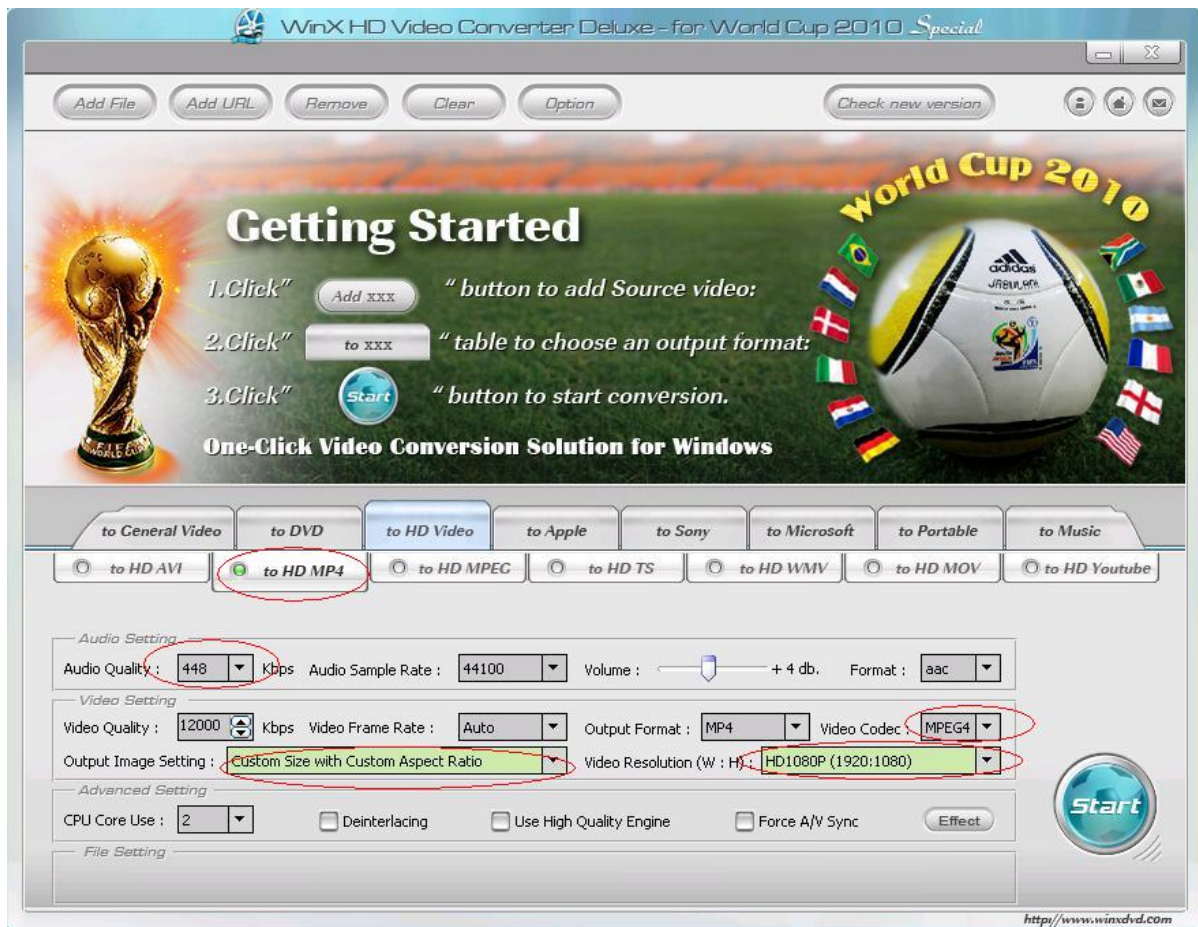
Download link: <http://www.winxdvd.com/hd-video-converter-deluxe/>

This software is not free.

MP4 gives the best display quality. Please follow the following steps:

1. Select "to HD MP4" tab.
2. Change audio quality to 448 kbps, and change video quality to 12000, output image setting to custom size with custom aspect ratio, and video resolution to HD1080P(1920:1080), video codec to MPEG4.

See the screen shot below for the recommend settings.



4.3 Connecting screen to PC

If your PC has a HDMI output then this is ideal. Simply connect one end of a HDMI cable to the screens HDMI input and the other to your PCs HDMI output port. If your PC does not have a HDMI output, connect it to the screen using a VGA cable instead. To change the input source of your screen press the TV/AV button, navigate to your desired source and press "OK" on your remote control.

4.4 My media file does not fit properly on the screen

If your media is being displayed with black edges please refer to section 2.11. This has happened because the file does not have a 16:9 aspect ratio (1920x1080). Please resize file to 1920x1080 pixels and try loading the media onto the display once again.

4.5 My media file will not display or is missing from the playlist

In this situation the first step to take is to start with a blank USB drive. Copy one supported picture file (2.1 Supported Media Files) onto the blank USB drive and insert this into the unit. If this works there are most likely one or more unsupported files or folders on your original playlist.

If this does not work please check first that the media file is the correct size to fit the screen –1920x1080 pixels. If it is any bigger than this it is likely the media file will not display.

Finally make absolutely sure that your media is a supported file type as the screen will not recognise unsupported file types.

4.6 My media files will not update

If you are have problems updating your display follow these steps to ensure it is not a technical issue.

- 1) Ensure that there are no additional unsupported files or folders stored on the USB drive.
- 2) Make sure the USB drive is firmly inserted into USB slot
- 3) Before contacting your supplier try another USB drive to be certain this is not the fault.

4.7 My moving GIF files will not move.

As the screen recognises any .gif file as an image it will display the first frame of a moving gif for the allocated image display time.