

# OT Installation Guide

Revision date: 14/10/20



# Instructions

---

 Please read entire instruction sheet before you start.

*Please ensure the Power Cable and (if needed) LAN Cable are already in place prior to the installation beginning. It is recommended to have them travelling through a thick tube so they do not get stuck in the concrete. The tube can then be shortened when the concrete has set.*

## Section 1: Installing with the Base

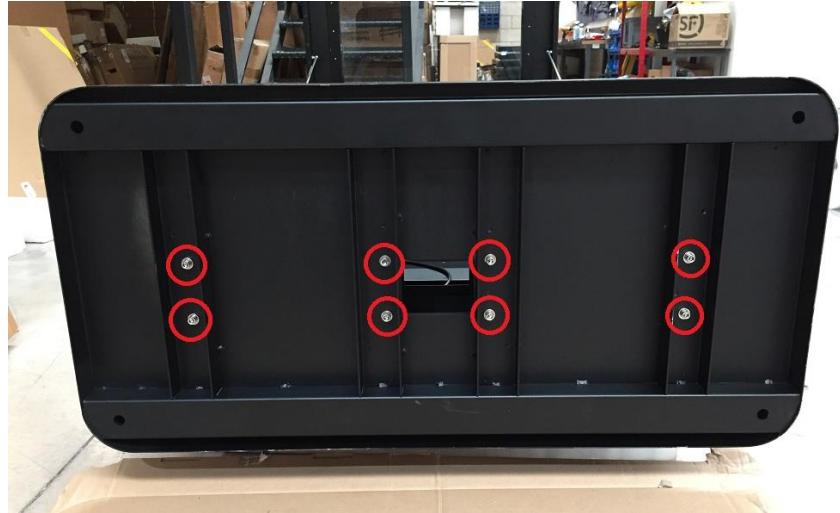
### Step 1

Lay the unit down face up on a raised surface and find the 8 mounting holes on the bottom.



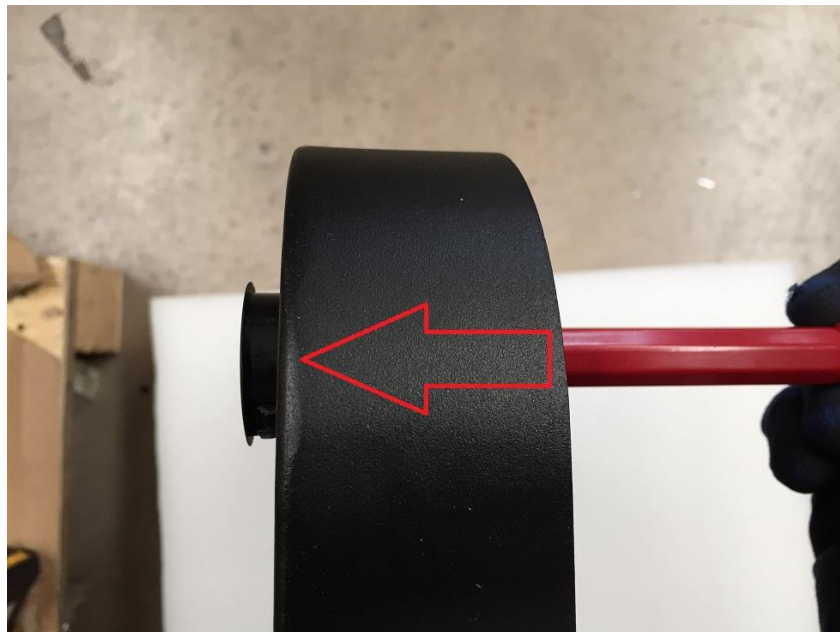
## Step 2

Use the 8 bolts and washers in the accessory bag to fix the base to the bottom of the screen through the 8 mounting holes. The longer side of the base needs to be on the front of the screen.



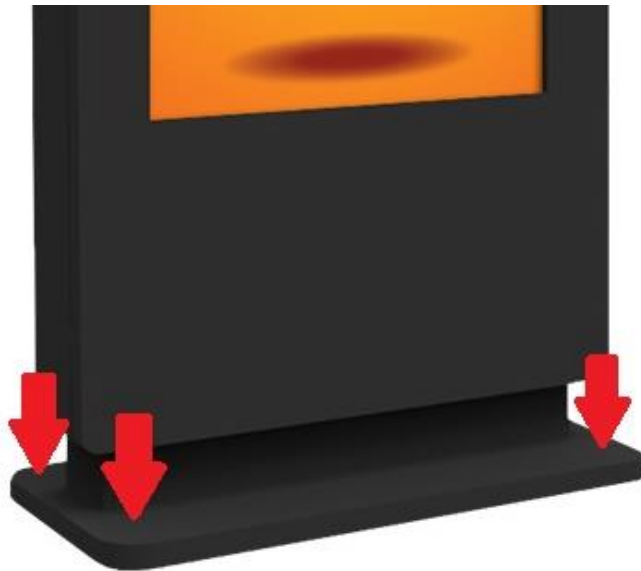
## Step 3

Remove the plastic caps on each corner of the base by pushing them out through the bottom.



## Step 4

Move the whole unit to the required position and stand it up in the position you want this to be installed. Ensure you leave enough room for the front of the screen to open, for general maintenance purposes.



*Note: The screen will be very heavy, so the more people that help with this the easier it will be.*

The best solution for the bolts to use would be Concrete Anchor Bolts.



## Step 5

Re-fit the plastic caps once the installation is complete.

## Section 2: Installing with the Smaller Base

### Step 1

Lay the unit face up on a raised surface, and open the front of the screen with the keys that are located in the accessory bag.



When the door is opened all the way, it will retain its position.



## Step 2

Locate the 8 screws holding the smaller stand to the bottom of the screen, and unscrew all 8 to remove it.



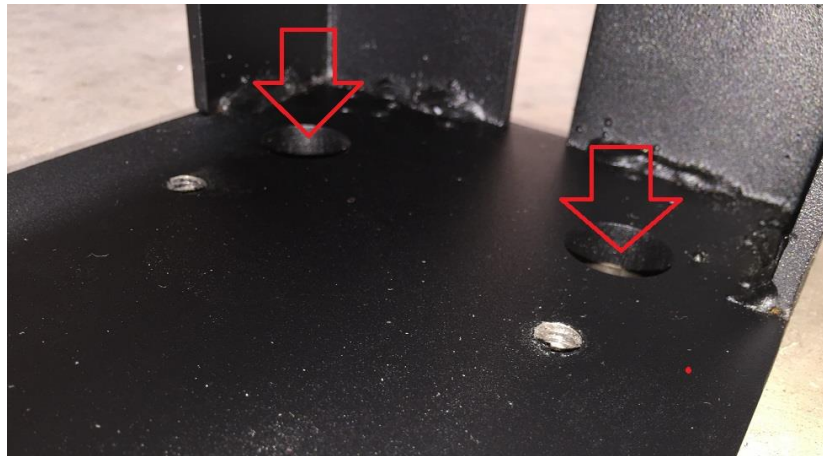
## Step 3

Pull the two parts of the stand away from each other (the larger piece will cover the smaller piece).



## Step 4

Fix the bottom part of the smaller stand to the concrete where you want to mount the screen. Ensure enough room is left in front of the screen so the door can still be opened.



*Note: This can also be done by using rods pre-set into the concrete to fasten the base to. You can have Rods input into the concrete in the same VESA pattern as the holes on the bottom of the base*



## **Step 5**

Place the top part of the smaller stand onto the smaller part that has been fastened to the concrete.

## **Step 6**

Close the door of the screen, and begin moving it ready to be placed back onto the stand. Line it up, and get as many people necessary to hold the screen in place.

*Note: The screen will be very heavy, so the more people that help with this the easier it will be.*

## **Step 7**

Open the screens door again, and use the 8 screws removed in step 2 to fasten this back to the smaller base.